

MACHINE-DATA

Machinetype	: Slip Grinding Machine
Make	: ZEGA
Type	: ZCVS 250
Year	:
Control type	:
Control	:
Storage location	:
Origin	: Turkey
Delivery time	: Nach Absprache
Quotation	: From stock - free on truck
Price	: on request



TECHNICAL DATA

charge load	/
	/
Dimensions (L/W/H)	1090/1090/940 mm
weight	350 kg
0	250 l

TECHNICAL DESCRIPTION

? For different processes with different dimension stone types in the same machine

? Usually for large-sized and sensitive parts

? Various volumes in the range of 20lt ? 1250lt

? Without seperating system

? Deburring and polishing for all kinds of metal and non-metal materials

? Suitable for automation system

? Optional accessories

ZCV Series machines are used for deburring, polishing, roughness removal, oil and rust removal, descaling, colour changing, delustering, aging etc processes for metal or non-metal materials.

The machines in this series are generally suitable for big size and sensitive parts, and the processed parts are collected manually by the staff at the end of the process.

The bowl design is one of the important factors to achieve the desired surface quality in the part by keeping the process time in minimum.

The O-shaped design of the bowl is designed by considering vibration optimization and optimal kneading motion. The bowl is made of special steel and has a tension-free and vibration-resistant welding structure.

The chassis height and springs are ergonomically designed so that staff can work with high efficiency.

Its resistance against vibrations has been increased; with rigid and reinforced support construction; adjustable insulators flexibly mounted to absorb vibrations are some of the design features of the machine chassis.

Long-lasting special motor series is used which have CE and Ex standards, high performance, cast-bodied, hollow roller bearings and it does not require lubrication.

Inside of the bowl is covered with 90 Shore polyurethane material which is resistant to abrasion. In this way, a long service life is achieved without requiring repair and maintenance.

Makinalarımızda açıp kapatması kolay tas bosaltma bölümü bulunmaktadır.

Our machines have a chip unloading section that is easy to open and close.

Electrical panels with CE Certificate, designed in accordance with EU standards, are used. There are main switch and emergency stop switch. The working time controller and time clock are included in the standard equipment. Three-phase electrical connection is used.

Optionally, dosing pump control, speed control unit, valve control unit etc. can be added to the electrical panel. It can work integrated with automation systems with PLC software

Slip Grinding Machine
ZEGA
ZCVS 250
Stock no. :2065-H1088

There are clean water inlet and waste water discharge valves. If preferred, standard water valves can be replaced as solenoid valves. In this case, valve on-off control can be done from the electrical panel.

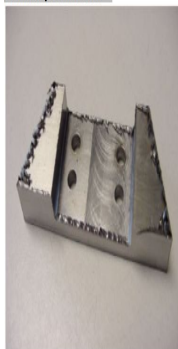
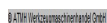
The dosing pump mounted on the machine is installed as standard. The dosing pump automatically sprays the chemicals used in the process in desired periods.

VIDEO-LINKS

WEB-LINK

https://lagermaschinen.de/maschinen-datenblatt/Slip_Grinding_Machine/ZEGA/ZCVS_250/2065-H1088

© ATMH Werkzeugmaschinenhandel GmbH



Model	A	B	C	D	E	F	G	H	Max Power (W)	Speed (mm/s)	Size (mm)
2500 180	220	200	700	820	180	820	580	920	1.7	1000	180
2500 260	270	290	890	920	260	430	690	950	1.7	1000	210
2500 380	280	400	1120	1200	380	430	920	1100	1.9	1000	320
3000 180	270	320	1200	1270	380	430	1020	1200	2.5	1000	180
3000 260	400	430	1560	1600	400	510	1080	1280	2.5	1000	240
3000 380	410	470	1760	1800	500	490	1200	1420	3.2	1000	320
3000 460	510	470	2000	2200	580	490	1250	1460	3.1	1000	380

CC(1)180	618	619	208	228	380	609	1280	1480	11	1800
----------	-----	-----	-----	-----	-----	-----	------	------	----	------

